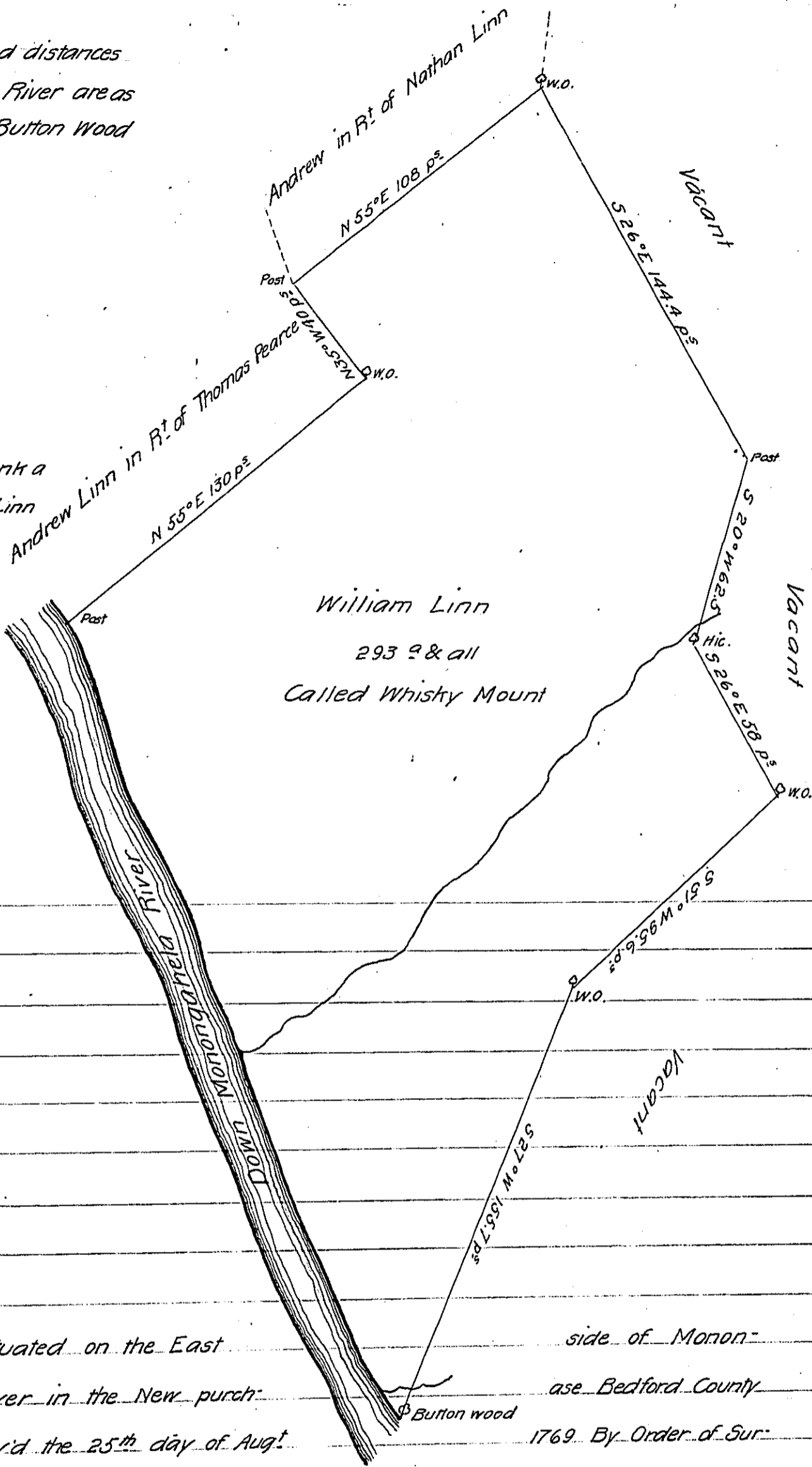


The Courses and distances down Monongahela River are as follows Beg<sup>d</sup> at a Button Wood thence -

- N 29° W 20 p<sup>s</sup>
  - N 22° W 36 p<sup>s</sup>
  - N 20° W 27.2 p<sup>s</sup>
  - N 18° W 111 p<sup>s</sup>
  - N 23° W 24.8
  - N 16° W 68 p<sup>s</sup>
- 287

to a post on the Bank a Corner of Andrew Linn



Situated on the East side of Monongahela River in the New purchase and Survey'd the 25<sup>th</sup> day of Aug<sup>t</sup> 1769. By Order of Survey N<sup>o</sup> 2847 dated April 5<sup>th</sup> 1769. To John Lukens Esq<sup>t</sup> Surveyor General

side of Monongahela River in the New purchase Bedford County 1769. By Order of Survey N<sup>o</sup> 2847 dated April 5<sup>th</sup> 1769. By Arch<sup>d</sup> M<sup>c</sup>Clean Dep. Sy<sup>t</sup>

IN TESTIMONY that the above is a copy of the original remaining on file in the Department of Internal Affairs of Pennsylvania, made conformably to an Act of Assembly approved the 16th day of February, 1833, I have hereunto set my Hand and caused the Seal of said Department to be affixed at Harrisburg, this eighteenth day of April 1904

*Joseph P. Pearson*  
Secretary of Internal Affairs.